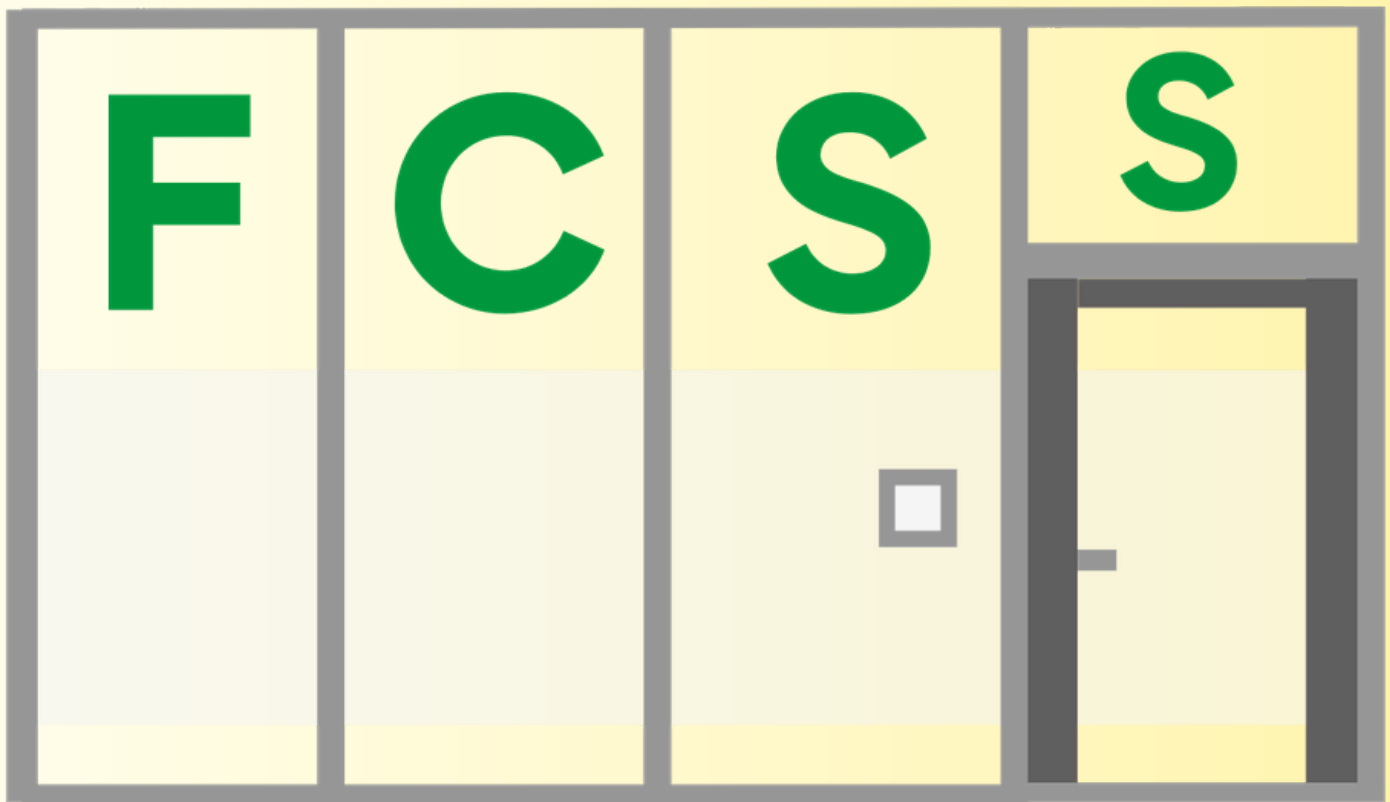


FCSS Offices Plan Guide:



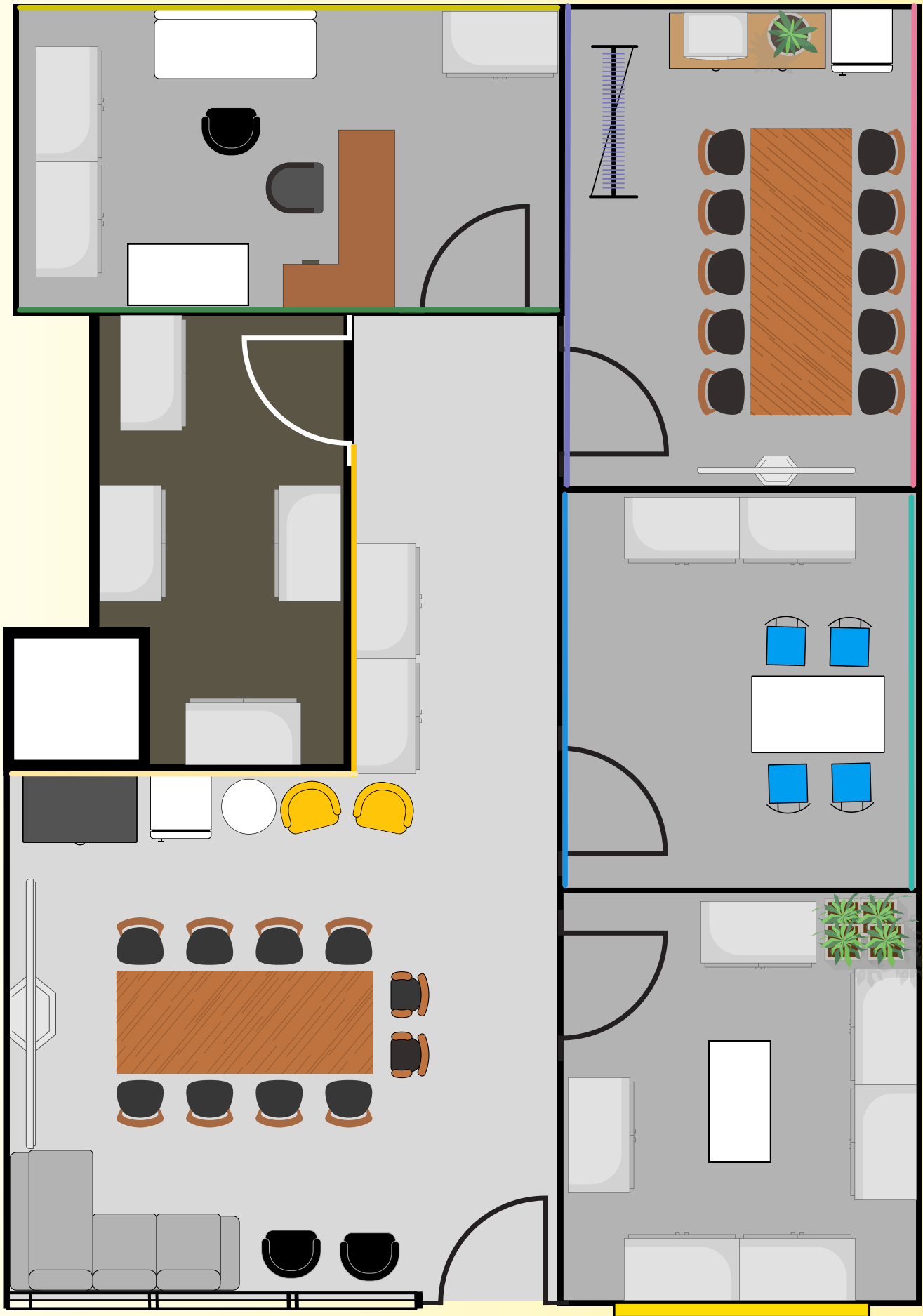
Created by: The Executive Director and
ED Student Services



FCSS Offices: Plan in detail

For the purpose of space planning and visualization, the DCC-331 floorplan was 3D-modeled in Sketchup Pro. This allowed for a more intuitive understanding of how various elements, such as furniture and circulation paths, would fit within the actual scale of the FCSS Offices. The shapefile, containing precise spatial data of the office area, was acquired by FCSS from Central FM&D Space Management. This shapefile was essential for accurately constructing the 3D model, ensuring that it reflects the true dimensions and constraints of the physical space.

FCSS Offices: Space Diagram



Paint Codes Per Room:

DCC-331: Front Meeting Space (phase one)



LEMON MERINGUE
HEX: #FFE 8A1
Pan Tone: 2023-50



ULTRA WHITE
HEX: #ECE EEB
Pan Tone: 2021-30



SUNSHINE YELLOW
HEX: #FFC E0B
Pan Tone: CC-10

DCC-328: Storage Room #1 (phase one)



ULTRA WHITE
HEX: #ECE EEB
Pan Tone: 2021-30



ULTRA WHITE
HEX: #ECE EEB
Pan Tone: 2021-30

DCC-329: Multi-Purpose Room (phase two)



POOLSIDE BLUE
HEX: ##2EB CB1
Pan Tone: 2048-40



ULTRA WHITE
HEX: #ECE EEB
Pan Tone: 2021-30

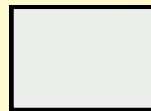


TORONTO BLUE
HEX: #199 FCC
Pan Tone: 2060-40

DCC-330: Back Meeting Space (phase two)



DEEP CARNATION
HEX: #E97 B9D
Pan Tone: 2086-40



ULTRA WHITE
HEX: #ECE EEB
Pan Tone: 2021-30

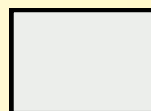


CROCUS PETAL PURPLE
HEX: #9385B9
Pan Tone: 2071-40

DCC-332: Student Services Room (phase two)



YEW GREEN
HEX: #D0C 300
Pan Tone: 2025-20



ULTRA WHITE
HEX: #ECE EEB
Pan Tone: 2021-30



ONCE UPON A TIME
HEX: #418 A4F
Pan Tone: 574

DCC-331 Lemon Meringue Wall

DCC-331: Front Meeting Space



LEMON MERINGUE
HEX: #FFE 8A1
Pan Tone: 2023-50



DCC-331 Sunshine Yellow Wall

DCC-331: Front Meeting Space



SUNSHINE YELLOW
HEX: #FFC E0B
Pan Tone: CC-10

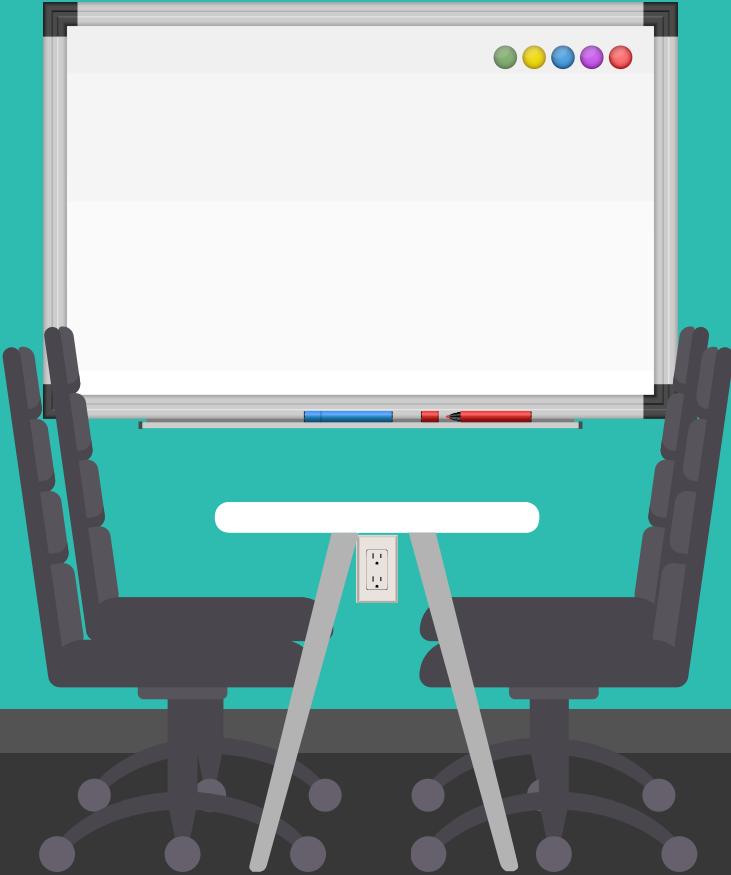


DCC-329 Poolside Blue Wall

DCC-329: Multi-Purpose Room



POOLSIDE BLUE
HEX: ##2EB CB1
Pan Tone: 2048-40

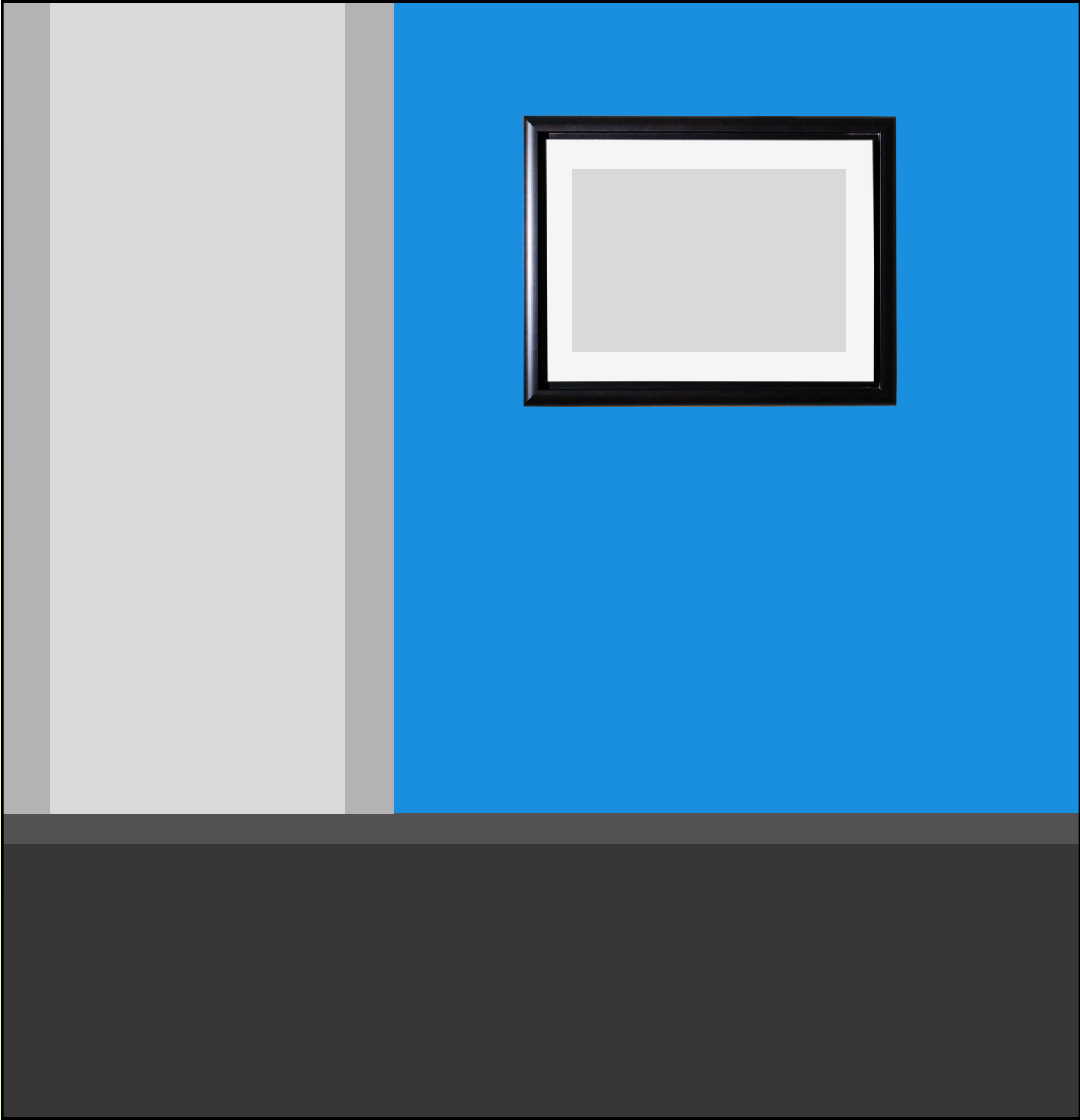


DCC-329 Toronto Blue Wall

DCC-329: Multi-Purpose Room



TORONTO BLUE
HEX: #199 FCC
Pan Tone: 2060-40



DCC-330 Pink Wall

DCC-330: Back Meeting Space



DEEP CARNATION
HEX: #E97 B9D
Pan Tone: 2086-40

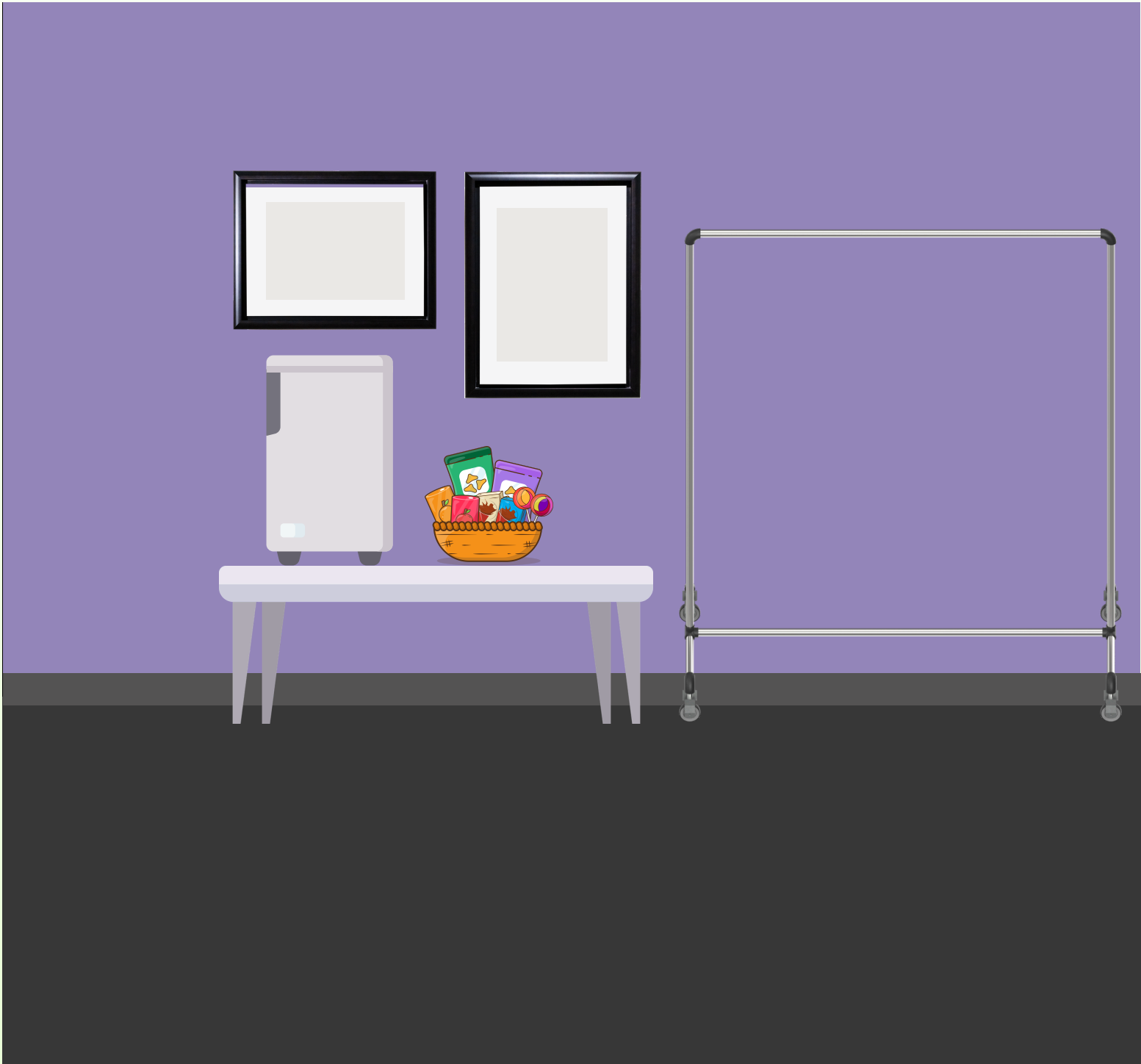


DCC-330 Lavender Wall

DCC-330: Back Meeting Space



CROCUS PETAL PURPLE
HEX: #9385B9
Pan Tone: 2071-40



DCC-332 Lime Green Wall

DCC-332: Student Services Room



YEW GREEN
HEX: #D0C 300
Pan Tone: 2025-20



DCC-332 Forest Green Wall

DCC-332: Student Services Room






ONCE UPON A TIME
HEX: #418 A4F
Pan Tone: 574



DCC-331 Items Needed:

DCC-331 Purchases Needed:

Image	Item Name	Price, Tax Shipping	Room Location	Total Cost	URL
	Harraj 32\" data-bbox="178 358 288 378">Harraj 32\" data-bbox="178 358 288 378">Wide 3 - Shelf Storage Cabinet	\$345.77	3 in DCC-328 2 in DCC-331 1 in DCC-332 3 in DCC-333	\$3,111.92	https://www.wayfair.ca/organization-storage/pdp/inbox-z
	18.6 Cubic Feet Energy Star Bottom Freezer Refrigerator with Water and Ice Dispenser	\$1,185.37	1 in DCC-331 Lemon Meringue Wall	\$1,185.37	https://www.wayfair.ca/appliances/pdp/moffat-295-bott
	Lipped Shelf Utility Cart with Cabinet - 8\" data-bbox="178 482 288 518">Lipped Shelf Utility Cart with Cabinet - 8\" data-bbox="178 482 288 518">Pneumatic Wheels, 45 x 25 x 37\", Gray	\$579.00	1 in DCC-332	\$579.00	https://www.uline.ca/Product/Detail/H-8315GR/Utility-Ca

DCC-331 Already Have:

- Shelving Unit (In SHE - FM&D to move to DCC)
- Mini Fridges in DCC-332 and DCC-330
- Boxes
- Organizer for shelves
- Bins
- Baskets
- Pillows
- Umbrella Bin
- Vinyl Geometrics Shapes and Logo

Next Steps

STEP ONE:

Have manager purchase items with location drop off being DCC-331 (FCSS Offices) So FM&D does not have to move it twice.

STEP TWO:

Have FCSS Team build out the storage units one day in the locations that they are going see map above for locations.

STEP THREE:

Notify the student hive clubs about the storage lockers being available, and ask for their keys to be returned to the Manager of Student Engagement and Development - FCSS.

STEP FOUR:

Have student hive clubs utilise the storage units and re-locate their stuff to them to fully implement the FCSS Offices Policy.